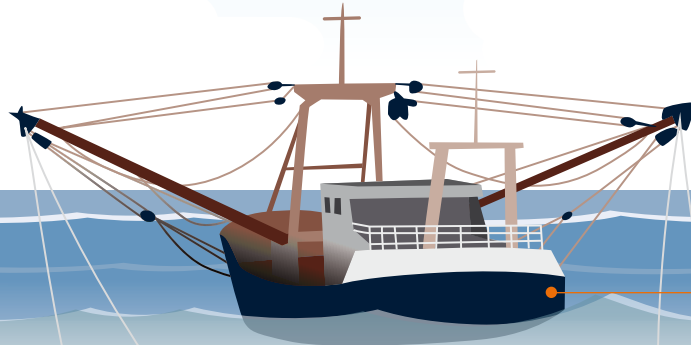
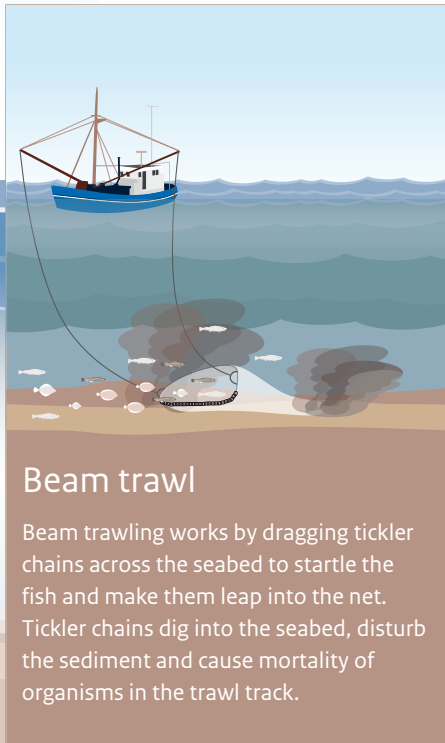




Pulse Fishing

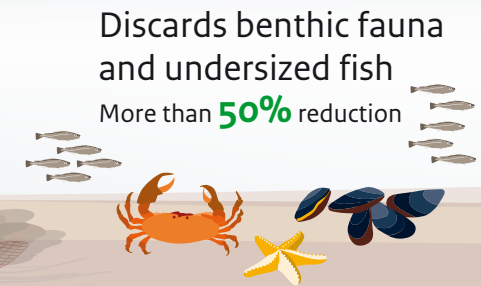
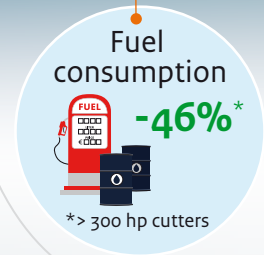
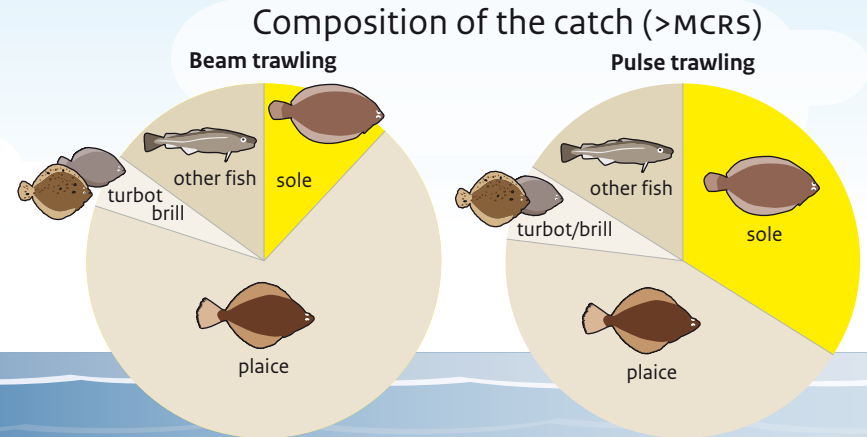
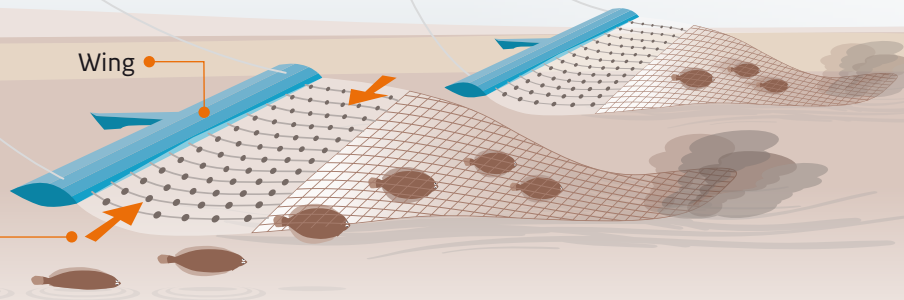
Pulse trawling as a promising alternative to beam trawling



Pulse trawl

- Improved selectivity of sole.
- Reduced fuel consumption.
- Reduction of discarded benthic fauna and undersized fish.
- Indication of higher survival of discarded sole and plaice.

Weak electric pulses make the fish leap into the net.



- About **20%** reduction in the seafloor swept per fishing hour.
- Reduced penetration of the gear into the seafloor.

Pulse trawl effects

Multi-annual research program

- A 4 year research program has started in 2016 to study the size selectivity and the effects on environmental aspects, fish species and other marine organisms.
- An international steering group guides the research and the annual international stakeholder dialogue meetings.
- The ICES WGELECTRA is involved and the advice of ACOM has been accommodated in the research project.

References

Rijnsdorp A. et al., 2016. *Pulse fishing and its effects on the marine ecosystem and fisheries*. Wageningen University & Research Report C117/16.

Turenhout M.N.J. et al., 2016. *Pulse fisheries in the Netherlands; Economic and spatial impact study*. Wageningen, Wageningen Economic Research, Report 2016-104.

Van der Reijden et al., 2017. doi: 10.1093/icesjms/fsx019

Want to know more?

Visit pulsefishing.eu

25 April 2017